

PTB 3800



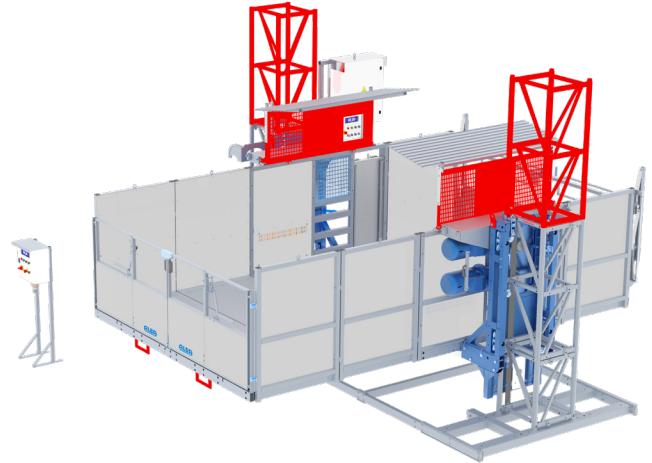
Transport Platform

RACK & PINION

OPTIMAL SOLUTION FOR TRANSPORTING
LARGE LOAD VOLUMES FOR CONSTRUCTION

The PTB 3800 Twin Mast Transport Platform is made up of a 10.5 ft wide modular platform system driven by means of a cardan drive shaft transmission for smooth synchronization of the twin motor groups.

Three optional platform extensions allow for flexibility and a maximum platform length of 17 ft-5 in to meet special job requirements such as lifting prefabricated structures or large equipment. A great hoist solution for maximum productivity on large job sites.



Main Features:

- Max. load capacity: 8400 lb (3800 kg)
- Max. speed: 66 ft/min (20 m/min)
- Max. height: 820 ft (250 m) (inquire about greater heights)
- Max. Cabin dimensions: 17.4 ft in x 10.5 ft (5.3 m x 3.2 m)

HIGHEST LOAD CAPACITY IN THE ALBA PRODUCT LINE



MAST SECTION



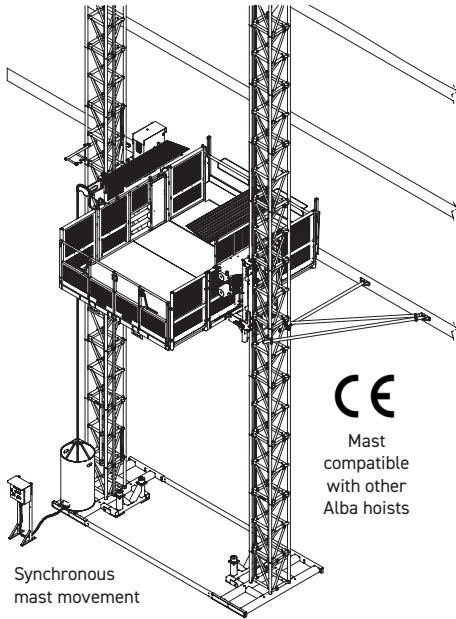
Square Mast

Length: 59" (1.5 m)
Weight: 1 Rack: 216 lb (98 kg)
2 Rack: 260 lb (118 kg)

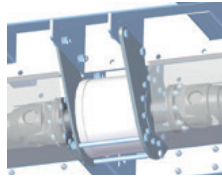
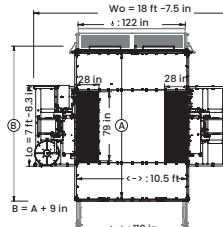
Mast Compatibility

Mast Climber: PEC 130/PEC 150
Material Hoist: MC 2000
Construction Hoist: EDC 2000
Transport Platform: PT 2000

DATA SHEET | PTB 3800



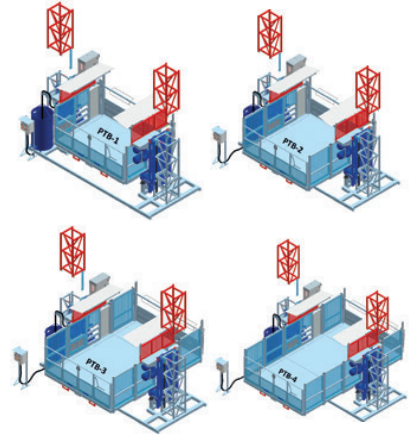
CPU and automatic floor management



Double shaft parachute with auto-recovery system



Dual operation mode: personnel & material



SAFETY DEVICES

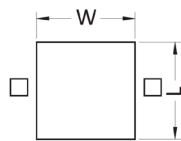
INCLUDED

- Gear motors with electromechanical brake
- Overspeed parachute with auto-recovery system
- Emergency controlled descent
- Cabin doors with automatic side protection
- Hoist control display with LED signaling
- Automatic floor management
- Buffers at the ground base
- Falling object protection guard
- Hoist control CPU, with event log
- Upper/lower end-track limit switch
- Safety end-track limit switch
- Overload detection device
- Mast presence switch
- Last mast without rack for safety
- Aux. platform for mast and anchorage assembly
- Non-slip galvanized steel cabin floor
- Movement warning horn
- Phase detection control
- Emergency stop

OPTIONAL

- Landing doors with mechanical / electrical interlock
- Base enclosure with electrical interlock
- Aux. crane for mast assembly
- Motor with brake wear signal
- Landing levels call system
- Parachute test remote control
- Automatic greaser

TECHNICAL FEATURES - PTB 3800-2V



Cage dimensions (W x L)

10.5 x 6.9 ft
10.5 x 10.5 ft
10.5 x 13.8 ft
10.5 x 17.4 ft

Maximum capacity

8,400 lb - (7 people)
7,700 lb - (7 people)
7,050 lb - (7 people)
6,400 lb - (7 people)

Vertical speed	72 ft/min (22 m/min)
Motor control	FREQUENCY CONVERTER
Maximum height	820 ft (250 m)*
Anchorage each (max.)	40 ft (12 m)
Height over last anchorage	10 ft (3 m)
First anchorage height	20 ft (6 m)
Loading height-to-ground with cable bin	3 ft (800 mm)
with cable trolley	4 ft (1150 mm)
Transporting Dimensions	8 ft x 19 ft x 8 ft (2.350 x 5.680 x 2.400 mm)
Regulations reference	ANSI A92.10

ELECTRICAL DATA

Motor power	4 x 5.5 kW
Input power connection	380 ÷ 460 V - 50/60 Hz
Power consumption	30 kW
Nominal / Starting current	50 A
Supply power	50 kVA
Overload protection	3 x 63 A
Differential protection	
Calibration	32 A
Sensitivity	300 mA
Control voltage	48 V
Auxiliary hand tool socket	120 V - 50/60 Hz 1200 W
Cable Section	4 x 6 AWG

(*) For greater heights, ask to manufacturer



2145 Indian Road
West Palm Beach, FL 33409
T. 561.616.9003
info@beeaccess.com
www.beeaccess.com