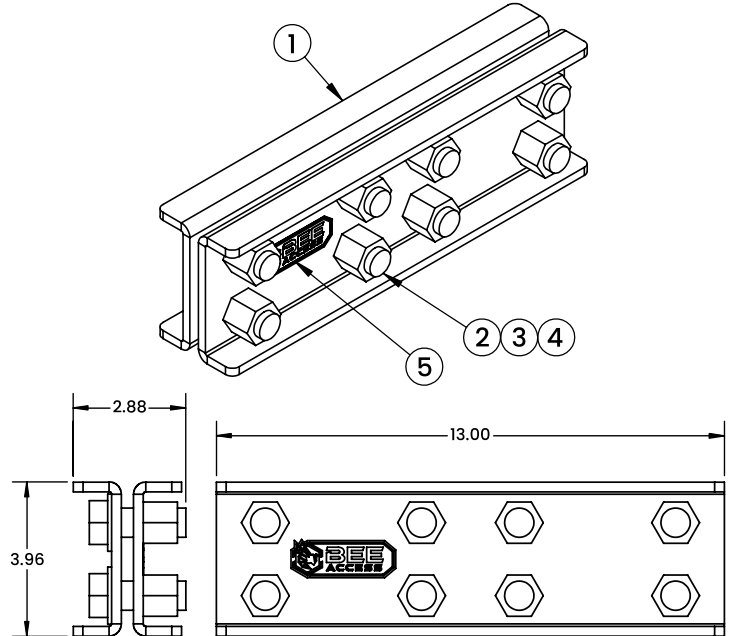




2145 Indian Road, West Palm Beach, FL 33409
Phone: 561.616.9003 www.beeaccess.com

SPEC-M-920112

UNIVERSAL SPLICE PLATE



NOTE:

Assembly and operation must be performed or supervised by a trained and competent person. Read and fully understand these instructions before proceeding with assembly/installation. Inspect all nuts to make sure they are functional and properly secured before every use. Tighten all hardware to a torque spec of 110 ft-lb.

Instructions for Use:

1. Position the two 5x5 beams that will be joined together using the splice side by side with the I-beam web and flanges adjacent to each other.
2. Position one of the Universal Splice plates on one side of the 5x5 beam and insert eight bolts with washers on the bolt head side into the holes in the plate with four bolts going through each of the adjacent 5x5 beams.
3. Position the other plate on the opposite side of the adjacent 5x5 beams so each side of the plate has four bolts going through both of the beams.
4. Install eight nuts on the bolts and tighten to a torque of 110 ft-lb.

DESCRIPTION

Streamline your inventory and simplify operations with our new Universal Splice Plate. This innovative, heavy duty solution combines the functionality of both the standard 5x5 Splice Plate Assembly (Part #320111) and the 5x5 Monorail Splice Plate (Part #920258) into a single, easy-to-use component.

By eliminating the need to stock two separate parts, this upgrade reduces complexity and improves efficiency across your fleet. When paired with our Monorail Clamp (Part #920257) and I-Beam Trolley (Part #920248), the Universal Splice Plate delivers a comprehensive, reliable solution for all your monorail access needs.

SPECIFICATIONS

Part No.: 920112

Dimensions: 13" X 2.8" x 4" (LxWxH)

Weight: 15 lb

Construction: Galvanized Steel

Parts List

Item #	Qty	Part #	Description
1	2	920112-10	Splice Plate, Universal 5x5
2	8	110282-0	Bolt 3/4"-10 x 2"
3	8	110480	Washer, 3/4" Flat SAE
4	8	110382	Nut, Lock 3/4"-10
5	1	LB-LOGO1	Label, Bee Logo - 1"



⚠ GENERAL WARNING – READ BEFORE USE ⚠

**Safety is a matter of life or death for riggers, operators and by-standers.
This warning is your share of duties for achieving safety.**

Your duty to understand and comply:

1. It is imperative for safety and efficiency of operations that this manual be read and fully understood by the rigger and the operator before rigging and using this equipment. All instructions contained herein must be carefully and strictly followed, including applicable Bee Access guidelines.
2. Should you hand over this equipment under any conditions, to any party operating out of your control, you must attach a clean copy of this manual and draw to other party's attention that strictly following all the instructions therein is a matter of life or death.
3. Before using this equipment, the rigger and the operator must become aware of all requirements of federal, state, provincial and local safety regulations, applicable to the entire suspended scaffold system and any component of it.
4. Never load this equipment above its rated load capacity.
5. Bee Access declines any responsibility for any special layouts, rigging or structural combinations beyond the descriptions of this manual.
6. Bee Access declines any responsibility for any other use of this equipment, than described in this manual.

Your duty to inspect and maintain:

7. Keep this manual available at all times for easy reference whenever required. Extra copies are available from Bee Access and/or your equipment supplier.
8. Carefully take notice of all labels affixed to the equipment. Never rig or operate this equipment if any label, normally fixed on it is obscured or missing. Replacement labels are available from Bee Access and/or your equipment supplier.
9. Every time the suspended scaffold is to be rigged or used, check that the Tieback Anchor, rigging, hoists, platform and other components are complete and in good working condition, prior to proceeding. All wire ropes and safety lines and their protective sleeves should be inspected at the beginning of every shift. Check for wear and abrasion due to contact with rigging equipment and/or the building structure.
10. **Daily inspection before use is to be carried out by a competent person.** Thoroughly check overall condition for bent, damaged or worn parts and broken welds. A signed and dated inspection record should be maintained for these purposes.
11. Make sure to comply with inspection and maintenance guidelines of all other components used in the suspended scaffold system.
12. Bee Access declines any responsibility for consequences of repairs or modifications brought out of its control to the product, specifically by replacement of original parts or repairs by another manufacturer.

Your duty to train and control people:

Compliance with safety rules extends to rigging operations which must be carried out only after securing safe conditions of operation as per safety regulations and requirements.

13. An operator must not be assigned to rigging, de-rigging, moving or operating a suspended scaffold if that person is not:
 - a. Mentally and physically fit for the purpose, especially at heights
 - b. Competent for the job to be performed
 - c. Familiar with the scaffold equipment as rigged
 - d. Professionally trained for working under the above requirements
14. Never let the equipment be moved or operated by unauthorized personnel. Keep the equipment, either rigged or unrigged, out of reach of unauthorized persons, while out of operation.
15. Every suspended job must be placed under the control of a person having the required competence and authority for checking that all the instructions prescribed by this manual be regularly and efficiently carried out.

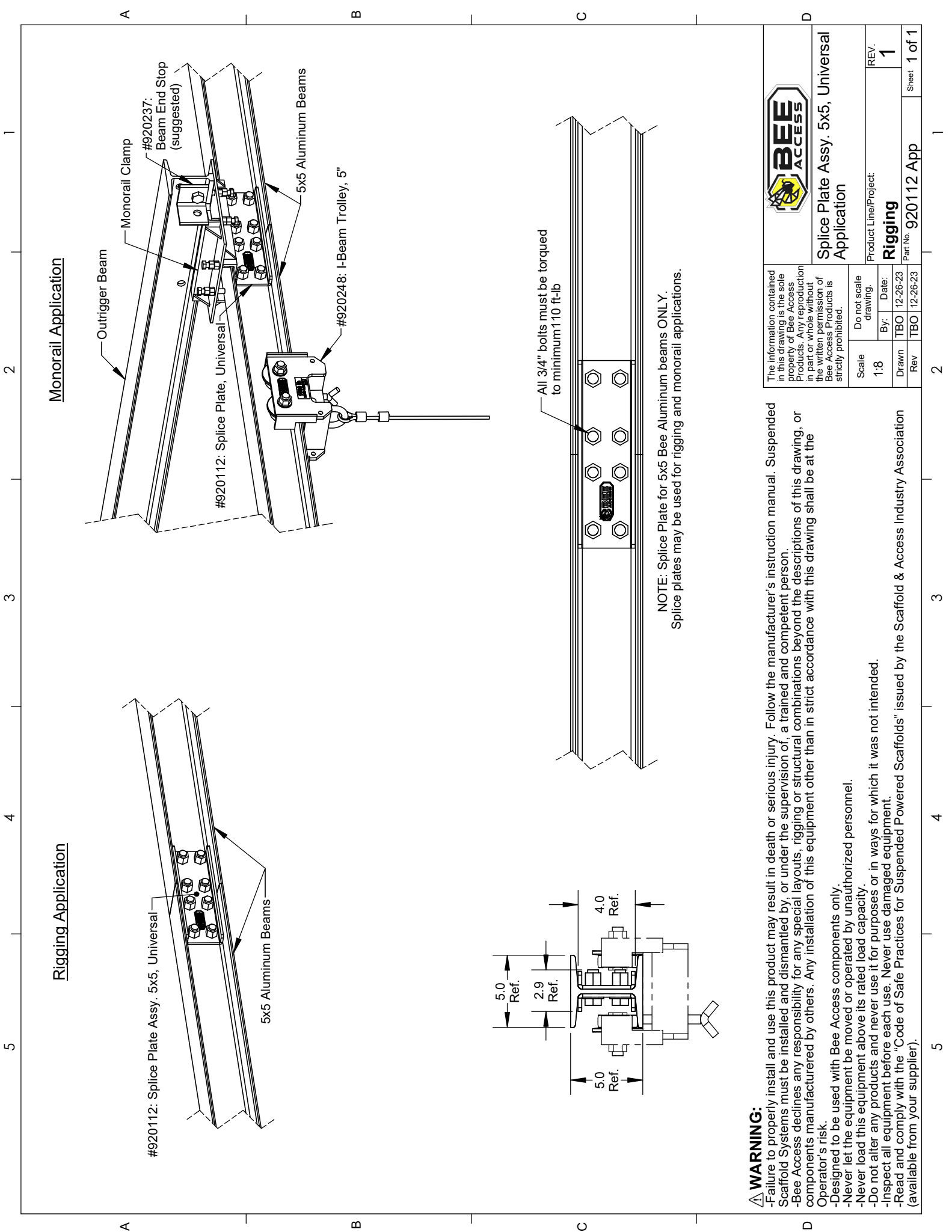
Your duty to safety of the entire scaffold system:

A suspended scaffold system is made up of numerous pieces of equipment; all of these components can contribute to the required safety only if:

16. Other components meet the requirements of the applicable safety regulations and requirements, are of the proper quality, assembled to form a safe and efficient suspended system and compatibility is approved by Bee Access.
17. The supporting structure and tie-backs can withstand every load to be applied, either static or dynamic, during rigging or operating of the suspended scaffold equipment.
18. All the requirements in strength and resistance are obtained with the necessary safety coefficients (call your supplier for regulations and professional standards).
19. All the calculations, design and subsequent work necessary to meet the above requirements have been made by a competent person on the basis of proper technical information regarding the site.

NOTE: This manual is neither a regulations compliance manual nor a general training guide on suspended scaffold operations. You must refer to proper instructions delivered by your supplier of the other pieces of equipment included in your suspended scaffold installation. Whenever calculations and specific rigging and handling are involved, the operator should be professionally trained to that end and secure relevant information prior to commencing such work.

Read and comply with the “Code of Safe Practices for Suspended Powered Scaffolds” issued by the Scaffold Industry Association (also available from Bee Access or your supplier).



Monorail Application

Rigging Application

⚠ WARNING:

- Failure to properly install and use this product may result in death or serious injury. Follow the manufacturer's instruction manual. Suspended Scaffold Systems must be installed and dismantled by, or under the supervision of, a trained and competent person.
- Bee Access declines any responsibility for any special layouts, rigging or structural combinations beyond the descriptions of this drawing, or components manufactured by others. Any installation of this equipment other than in strict accordance with this drawing shall be at the Operator's risk.
- Designed to be used with Bee Access components only.
- Never let the equipment be moved or operated by unauthorized personnel.
- Never load this equipment above its rated load capacity.
- Do not alter any products and never use it for purposes or in ways for which it was not intended.
- Inspect all equipment before each use. Never use damaged equipment.
- Read and comply with the "Code of Safe Practices for Suspended Powered Scaffolds" issued by the Scaffold & Access Industry Association (available from your supplier).

The information contained in this drawing is the sole property of Bee Access Products. Any reproduction in part or whole without the written permission of Bee Access Products is strictly prohibited.



Splice Plate Assy. 5x5, Universal Application

Scale	Do not scale drawing.	Product Line/Project	REV.
1:8			1
Drawn	By:	Date:	
TBO	TBO	12-26-23	
Rev	TBO	12-26-23	
Part No. 920112 App			Sheet 1 of 1