

PEC 130

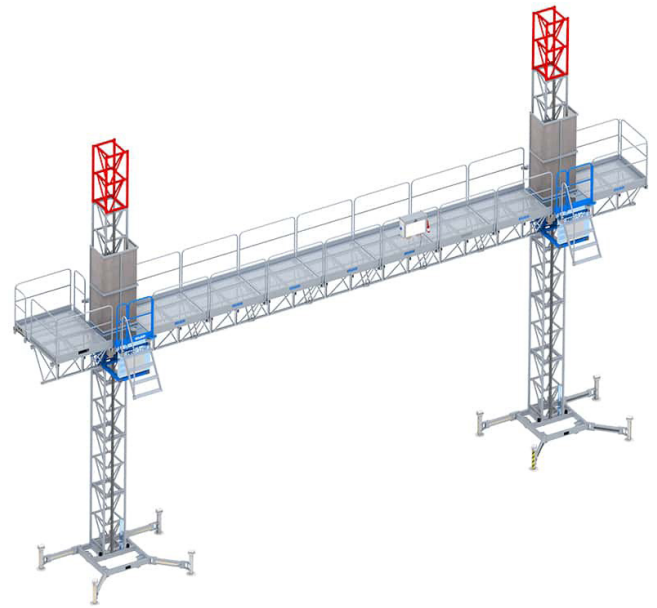


Mast Climber RACK & PINION

ROBUST STABILITY & ENHANCED CAPACITY

The PEC 130 integrates the best features from across our range of mast climbers to deliver unparalleled performance and reliability. Engineered for maximum stability and strength, it features a robust square mast, similar to the PEC 150, ensuring superior support.

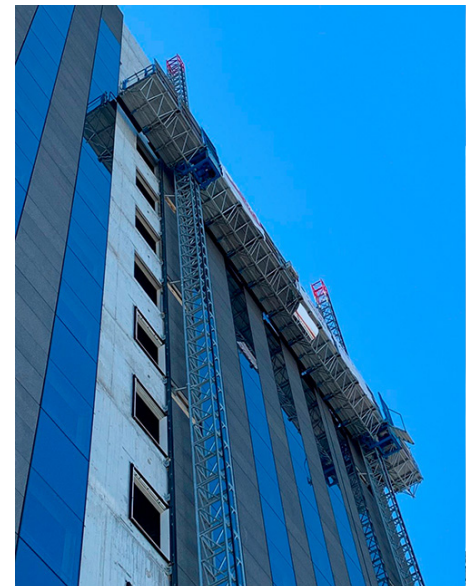
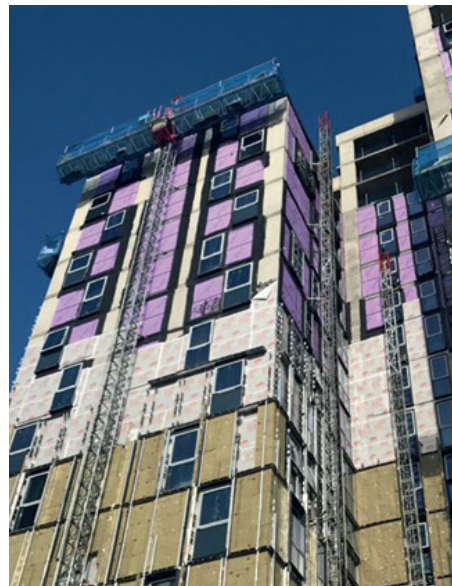
This model combines the lightweight, long platform of the PEC 120 with an advanced intermediate chassis, enabling it to reach standard construction lengths for full facade coverage. The PEC 130 offers enhanced load capacity, greater working height, and additional functionalities, making it the ideal solution for demanding construction projects.



Main Features:

- Max. load capacity: 9000 lb (4100 kg) with twin masts
- Max. speed: 30 ft/min (9 m/min)
- Max. height: 820 ft (250 m) (inquire about greater heights)
- Max. length: 111' 7" (34 m) with twin masts
- Motor power: 2 x 2.65 kW (60 Hz)

EXCELLENT PERFORMANCE, UNBEATABLE PRICE



MAST SECTION



Square Mast

Length: 58" (1.5 m)

Weight:

1 Rack: 216 lb (98 kg)

2 Rack: 260 lb (118 kg)

Mast Compatibility

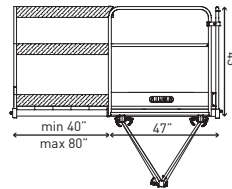
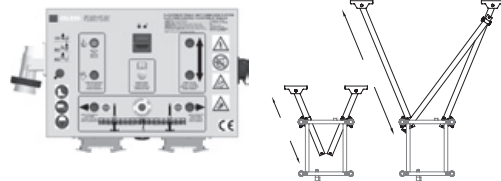
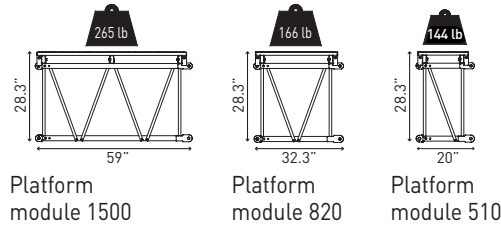
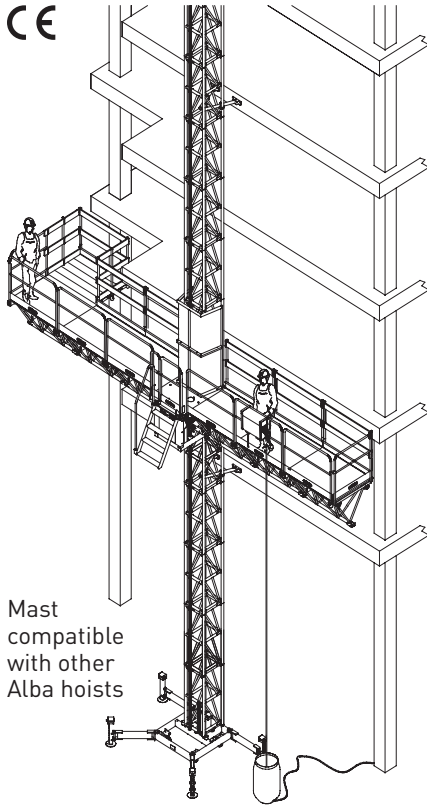
Mast climber: PEC 150

Material hoist: MC 2000

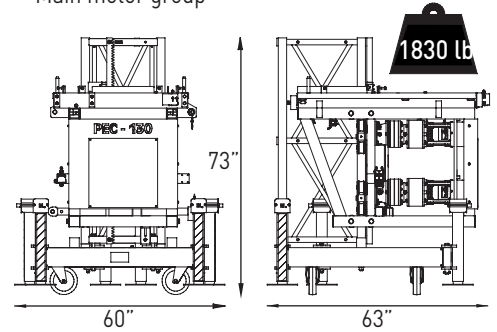
Construction hoist: EDC 1700 & 2000

Transport platform: PT 1800 & 3800

DATA SHEET | PEC 130



Main motor group



SAFETY DEVICES

INCLUDED

- Gear motors with electromechanical brake
- Safety centrifugal brake
- Emergency controlled descent
- Platform door with safety micro-switch
- Buffers at the ground base
- Panel with validating control system
- Upper/lower end-track limit switch
- Safety end-track limit switch
- Mast presence detector
- Last mast without rack for safety
- Automatic leveling system
- Platform floor of non-slip galvanized steel
- Movement warning horn
- Phase detection control relay and warning LED
- Emergency stop
- Base frame equipped with wheels
- Auxiliary hand tools socket
- Input power connector with phase quick-change

OPTIONAL

- Auxiliary crane for mast assembly
- Platform extension of special length
- Modular floors for platform extension
- Internal perimeter handrail posts
- Safety networks to avoid falling materials
- Angle 45° platform for special assemblies
- Jib-crane rail system for load handling
- Telescopic lateral handrail
- Load limiter
- Automatic greaser

TECHNICAL FEATURES

	SINGLE MAST	TWIN MAST
Maximum length	42 ft 8 in (13 m)	111 ft 7 in (34 m)
Maximum load	4,400 lb (2000 kg)	9,000 lb (4100 kg)
Vertical speed	30 ft/min (9 m/min)	
Platform width	47 in (120 cm)	
Platform extension	Standard: 40 in (102 cm) Max.: 80 in (204 cm)	
Motor power	2 x 2.65 kW (60 Hz)	4 x 2.65 kW (60 Hz)
Maximum height	820 ft (250 m)	
Anchorage each (max.)	40 ft (12 m)	
Height over last anchorage	5 ft (1.5 m)	
First anchorage height (max.)	30 ft (9 m)	
Loading height-to-ground	59 in (150 cm)	
Regulations reference	ANSI A92.9	

ELECTRICAL DATA

	SINGLE MAST	TWIN MAST
	60 Hz	60 Hz
Motor power	2 x 2.65 kW	4 x 2.65 kW
Input power connection	460 V – 60 Hz	460 V – 60 Hz
Power consumption	5.3 kW	10.6 kW
Nominal current	12 A	24 A
Supply power	10 kVA	20 kVA
Starting current	66 A	132 A
Overload protection	4 x 32 A	
Differential protection		
Calibration	32 A	
Sensitivity	300 mA	
Control voltage	48 V	
Auxiliary hand tool socket	265 V – 60 Hz 16 A	
Cable section	5 x 4 mm ²	5 x 6 mm ²



2145 Indian Road
West Palm Beach, FL 33409
T. 561.616.9003
info@beeaccess.com
www.beeaccess.com