

EPM 1000



Construction Hoist

RACK & PINION

EASY TO INSTALL, THIS HOIST IS SUITABLE FOR CONFINED SPACES

The high quality, compact design of the EPM 1000 rack & pinion construction hoist comes at an economical price. It utilizes the Alba triangle masts, allowing it to carry higher capacity loads compared to other compact personnel hoists. Its call control system can be set up and programmed by floor on the job site allowing for ease of use by workers. In addition, a version for lifting drywall with a slightly longer cabin is available upon request.

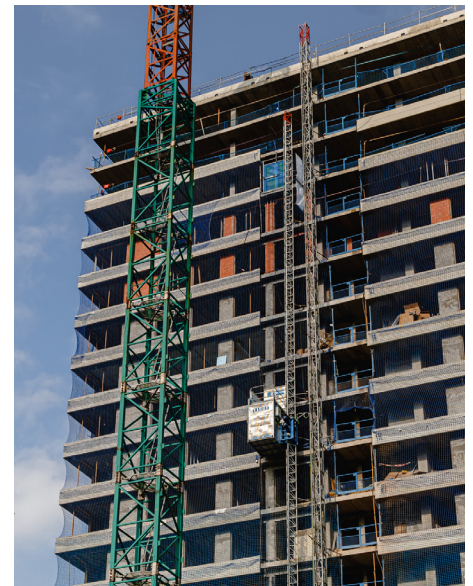
- Overspeed parachute with auto-recovery system
- Galvanized steel finish with a non-slip cage floor
- Hoist controls with LED display

Main Features:

- Max. load capacity: 2200 lb (1000 kg)
- Max. speed: 66 ft/min (20 m/min)
- Max. height: 400 ft (120 m) (inquire about greater heights)
- Motor power: 2 x 3.6 kW (60 Hz)
- Noise emission value: <70 dB



COMPACT DESIGN WITH HIGH LOAD CAPACITY



MAST SECTION



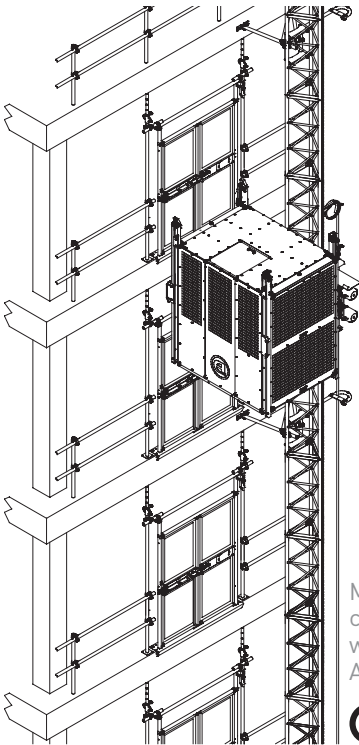
Triangle Mast

Length: 59" (1.5 m)
Weight: 104 lb (47 kg)

Mast Compatibility

Mast climber: PEC 120
Material hoist: MC 1000
Transport Platform: PT 1200

DATA SHEET | EPM 1000



Mast compatible with other Alba hoists



CPU and automatic floor management



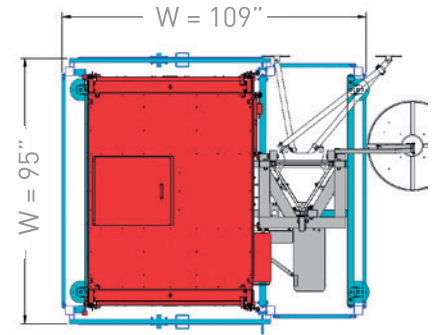
Landing levels call system



Overspeed parachute with auto-recovery system



Auxiliary catwalk for anchorage assembly



SAFETY DEVICES INCLUDED AND OPTIONAL

INCLUDED

- Gear motors with electromechanical brake
- Overspeed parachute with auto-recovery system
- Emergency controlled descent
- Cage doors with mechanical / electrical interlock
- Hoist control display with LED signaling
- Automatic floor management
- Buffers at the ground base
- Hoist control CPU, with event log
- Upper/lower end-track limit switch
- Safety end-track limit switches
- Overload detection device
- Mast presence switch
- Last mast without rack for safety
- Aux. catwalk for anchorage assembly
- Cage floor of non-slip galvanized steel
- Movement warning horn
- Phase detection control
- Emergency stop
- Emergency exit, accessible roof with safety railing
- Parachute test remote control and mast assembly

OPTIONAL

- Operator aux. external cage
- Automatic greaser
- Landing doors with mechanical / electrical interlock
- Base enclosure according to EN-12159
- Landing levels call system
- Aux. crane for mast assembly
- Motors with brake wear signal

TECHNICAL FEATURES - EPM 1000V

Motor control	DIRECT
Vertical speed	108 ft/min (33 m/min)
Maximum capacity	11 people or 2,350 lb (1000 kg)
Cage gross inner dimensions (LxWxH)	6' 7" x 4' 7" x 6' 11" (2 m x 1.4 m x 2.1 m)
Maximum height	400 ft (120 m)
Anchorage each (max.)	20 ft (6 m)
Height over last anchorage	5 ft (1.5 m)
First anchorage height	20 ft (6 m)
Loading height-to-ground	2 ft (61 cm)
Base assembly weight	1,000 lb (454 kg)
Noise emission value	<70 dB
Regulations reference	ANSI A10.4 / CSA Z185

ELECTRICAL DATA

Motor power	2 x 3.6 kW (60Hz)
Input power connection	380÷480V - 50/60 Hz - 3 phase
Power consumption	15 kW
Nominal current	40 A
Supply power	30 kVA
Overload protection	4 x 63 A
Differential protection	
Calibration	63 A
Sensitivity	300 mA
Control voltage	48 V
Auxiliary hand tool socket	120 V - 50/60 Hz 16 A
Cable Section	4 x AWG 8



2145 Indian Road
West Palm Beach, FL 33409
T. 561.616.9003
info@beeaccess.com
www.beeaccess.com