

**ALBA**

# MC 250 MATERIAL HOIST

RACK & PINION



**BUILDING  
THE  
FUTURE**





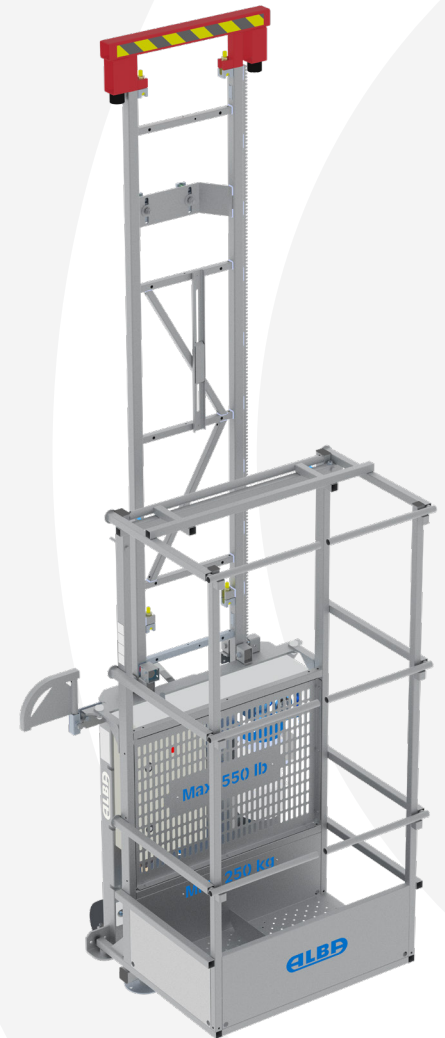
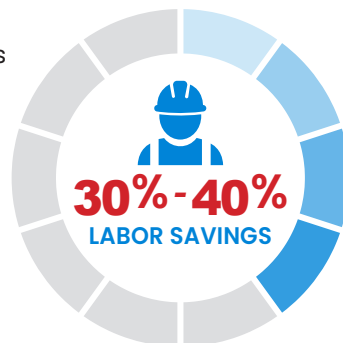
# MC 250 MATERIAL HOIST

## RACK & PINION

The ALBA MC 250 model is ideal for faster scaffold erection and dismantling, as well as safe and productive material lifting for the contractor. It is compatible with all brands of tube and coupler, system, and frame scaffolding on the market and can be equipped with different interchangeable carriers depending on the type of loads to be lifted or the requirements of the job. Bee Access will custom-design project-specific carriers for all of your job needs. We fully support the ALBA product line with ample stock of hoists, accessories, and spare parts as well as fast technical, expert installation assistance and product training.

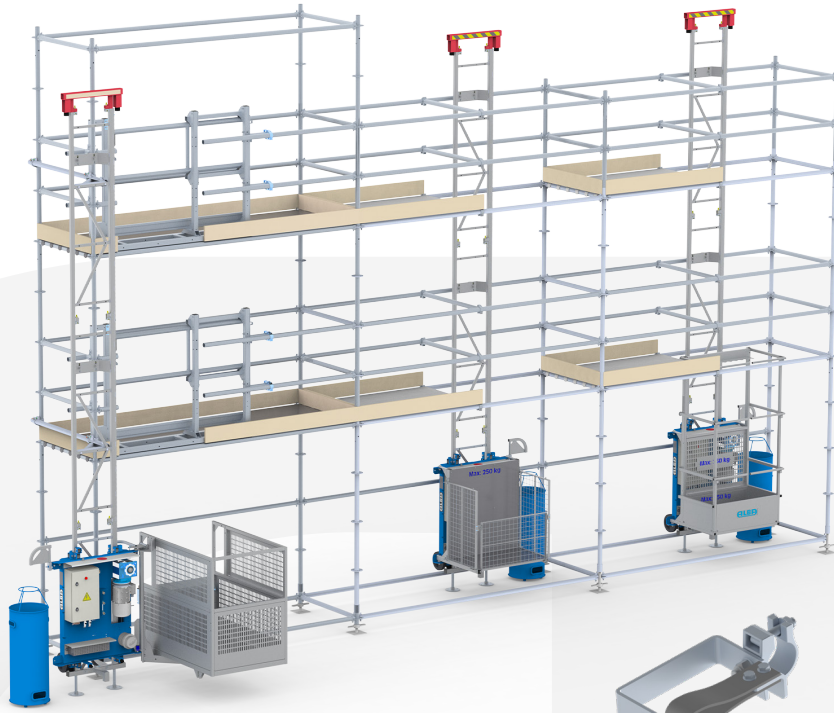
### FEATURES & BENEFITS

- Industry-leading 550 lb load capacity
- Rack and pinion drive is easier to install, more efficient, and trouble-free compared to wire rope systems
- Specially designed to be installed inside a tubular scaffold bay or on the outside with the use of a pivoting carrier
- No Loose Parts: Integrated mast anchor brackets and toggle bolts for fast and easy installation
- Industrial grade construction for reliability and durability
- Galvanize steel mast sections are durable and stand up to rough handling
- Soft start and stop is gentle on materials
- Optional: Wireless Remote Control / Battery Power Pack / GPS Receiver & Telematics
- Industry-leading safety features, such as;
  - Upper and lower limit switches
  - Overspeed safety device
  - Controlled descent device



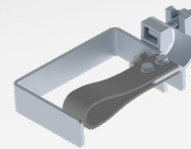
### MAIN SPECIFICATIONS

- **Max. load capacity:** 550 lb (250 kg)
- **Max. speed:** 65 ft/min (10 m/min)
- **Max. height:** 300 ft (60 m)  
(inquire about greater heights)
- **Motor power:** 1.8 kW (60 Hz)
- **Noise emission value:** <70 dB



# ALBA

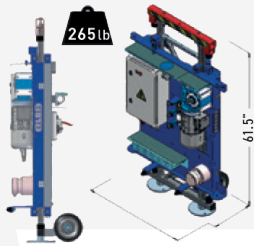
## BUILDING THE FUTURE



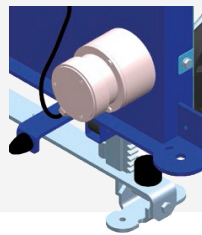
**Cable Guides**  
Installed Every 20 ft



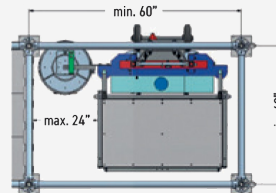
**H-Mast Bracket**  
For Non-Standard Anchoring Positions of Mast Sections



**Base Kit with Wheels**  
for easy transportation



**Overspeed Parachute**  
with auto-recovery system



**Inside Scaffolding**  
Installation dimensions

**Flat Mast Section**  
Length: 6'-6" (2m)  
Weight: 55 lbs (39kg)

### TECHNICAL DATA

<b>System Scaffold Cage (LxWxH)</b>	36 in x 20 in x 70 in (92 cm x 51 cm x 178 cm)
<b>Standard Carrier (LxWxH)</b>	36 in x 20 in x 36 in (92 cm x 51 cm x 92 cm)
<b>Easy Access Carrier (LxWxH)</b>	52 in x 32 in x 44 in (132 cm x 81 cm x 112 cm)
<b>Motor Control</b>	FREQUENCY CONVERTER
<b>First Anchorage Height</b>	3 ft (1 m)
<b>Regulations Reference</b>	ANSI A10.5

### ELECTRICAL DATA - 60HZ

<b>Input Power Connection</b>	208V single phase / Optional Battery Power
<b>Nominal Current</b>	10 A
<b>Supply Power</b>	5 kVA

### SAFETY DEVICES

#### INCLUDED

- Gear motor with electromechanical brake
- Overspeed parachute with auto-recovery syst.
- Emergency controlled descent
- LED for fault detection
- Buffers at the ground base
- Upper track-end buffers
- Upper/Lower track-end limit switch
- Safety track-end limit switch
- Mast presence detector (proximity switch)
- Emergency stop
- System scaffold cage specially designed to hold tubular scaffolding
- Special cage stand for 4m long tubes

#### OPTIONAL

- Installation kit for 3 -intermediate stops in mast



# CARRIERS & ACCESSORIES



**System Scaffold Carrier**  
Part# A15842N

Ideal for vertical transportation of system scaffolding components.



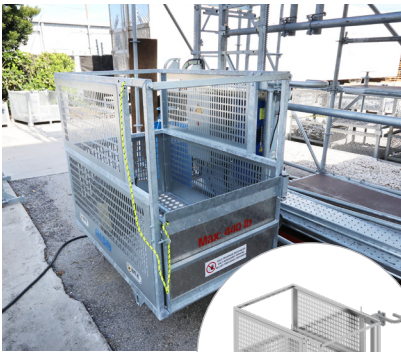
**Plywood Carrier**  
Part# 960803

Designed to carry 4x8 sheets of plywood or 5 ft wide scaffold frames.



**Fold-Down Carrier**  
Part# A15841 / A15846

For carrying dry goods or 5 gallon buckets. All sides open up for easy loading/unloading.



**Pivoting Carrier**  
Part# A15840G

Versatile carrier that mounts on the outside of the scaffold to any vertical post.



**Height Extension & Floor Divider**  
Part# 960810 / 960811

Use these accessories to convert the Pivoting Carrier to a System Scaffold Carrier.



**Mast Anchor Bracket**  
Part# 960807

Mounts the base & mast sections to a vertical post. Used in combination with pivoting carrier systems.



**Pivoting Adapter Frame**  
Part# 960808

Converts any standard carrier to a Pivoting Carrier for use on the outside of a scaffold.



**Mod Platform Adapter**  
Part# 960809

Allows the use of Mod Platform components to create a horizontal carrier up to 13.5 ft



**Light Bulk Carrier**  
Part# 960805

Light duty aluminum carrier for bulky material transport (e.g. insulation)